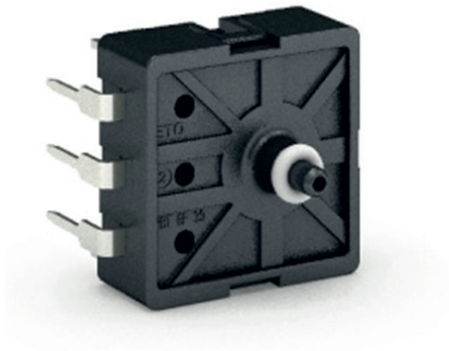


H2 Pressure Sensor - Low Pressure



Applications

- Fuel cell (anodic side)

Customer Benefits

- Automotive proven design & processes

Features

- Customized interface
- Customized output signal (analog, SENT, PWM)

The above specifications apply to the standard versions. Other versions are available on request.

Technical data

H2 Pressure Sensor - Low Pressure

Nominal pressure	up to 10 barA/barR
Overpressure	16 barA/barR
Burst pressure	30 barA/barR
Temperature range	-40 to 120°C
Protection class	-
Accuracy	< 1.5 % FSO
Supply voltage	5V

Detailed information requested?

ETO GRUPPE
info@etogruppe.com